

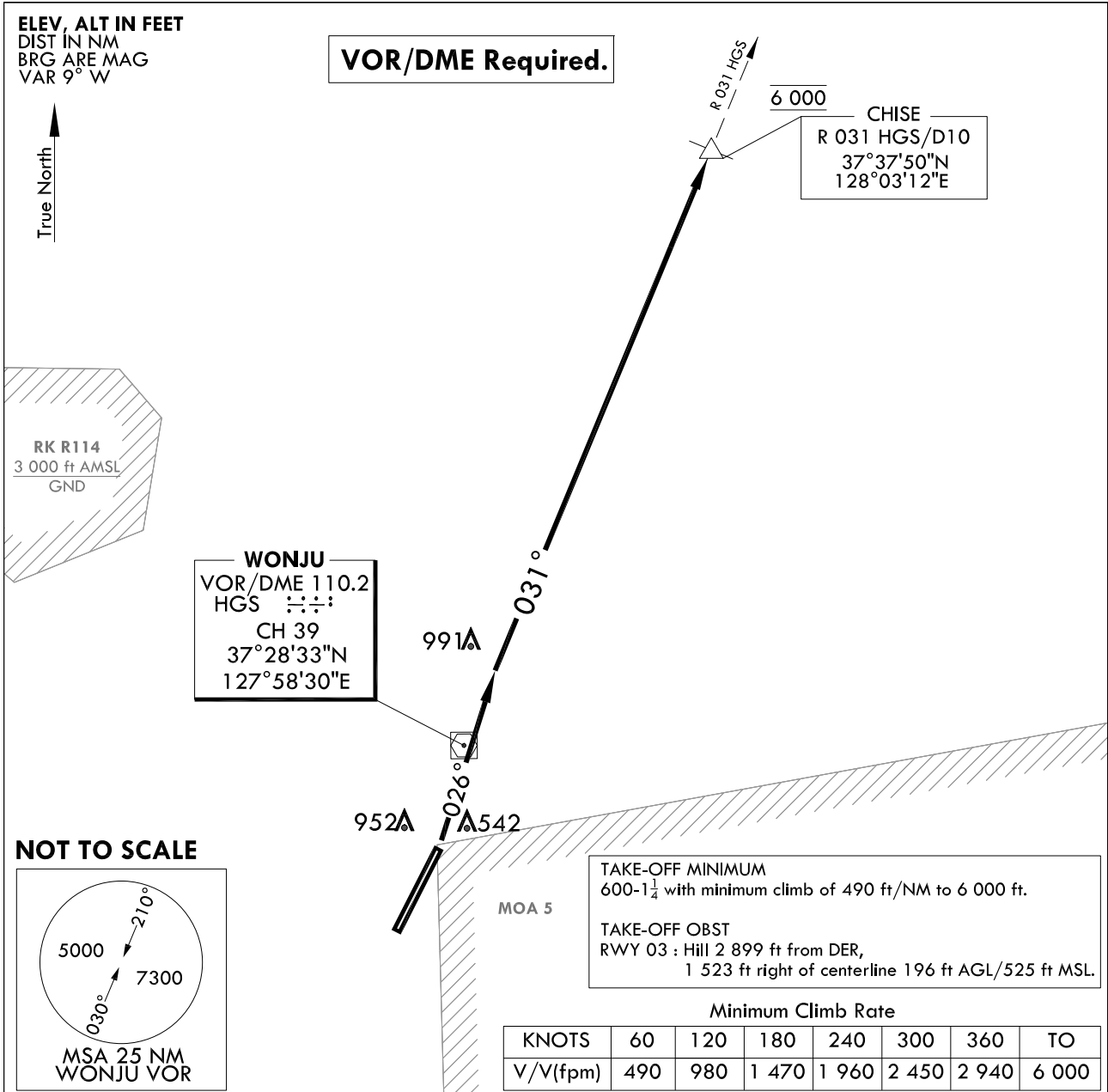
**STANDARD DEPARTURE CHART
INSTRUMENT (SID)**

TRANSITION ALT 14 000
TRANSITION LVL FL 140

WONJU DEP 130.2 268.5
WONJU TWR 118.325 126.2
236.6 265.5

**WONJU/Wonju(RKNW)
RWY 03
CHISE 1**

Note : Departure under U.S TERPS.



DEPARTURE PROCEDURE DESCRIPTION

CHISE 1 DEPARTURE

RWY 03 : Climb to 6 000 ft via HDG 026° to intercept R 031 HGS, then R 031 HGS to CHISE, then direct to Enroute fix and climb to assigned altitude.

Change : Information of course/track for standard instrument departure procedure.

INTENTIONALLY

LEFT

BLANK

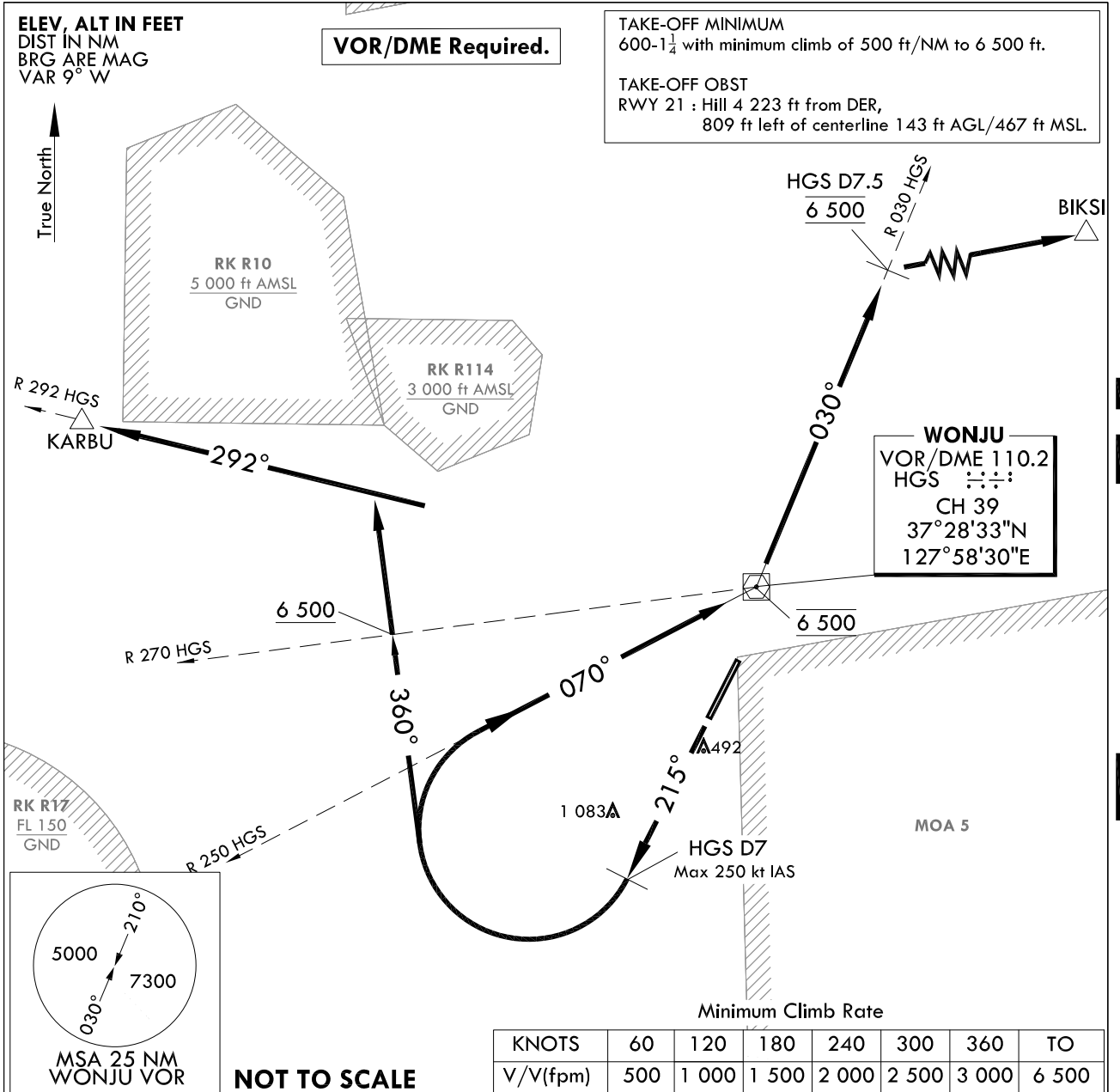
**STANDARD DEPARTURE CHART
INSTRUMENT (SID)**

TRANSITION ALT 14 000
TRANSITION LVL FL 140

WONJU DEP 130.2 268.5
WONJU TWR 118.325 126.2
236.6 265.5

WONJU/Wonju(RKNW)
RWY 21
WONJU 7

Note : Departure under U.S TERPS.



DEPARTURE PROCEDURE DESCRIPTION

WONJU 7 DEPARTURE

RWY 21 : Climb to 6 500 ft via HDG 215° to HGS D7, thence....
Max speed 250 kt IAS until reaching 6 500 ft.

KARBU transition : Then right turn HDG 360° to intercept R 292 HGS and
cross R 270 HGS at or above 6 500 ft,
then R 292 HGS to KARBU and climb to assigned altitude by ATC.

BIKSI transition : Then right turn to intercept R 250 HGS and cross HGS at 6 500 ft,
then left turn R 030 HGS to HGS D7.5 and cross at 6 500 ft,
then direct to BIKSI and climb to assigned altitude by ATC.

Change : Information of course/track for standard instrument departure procedure.

INTENTIONALLY

LEFT

BLANK

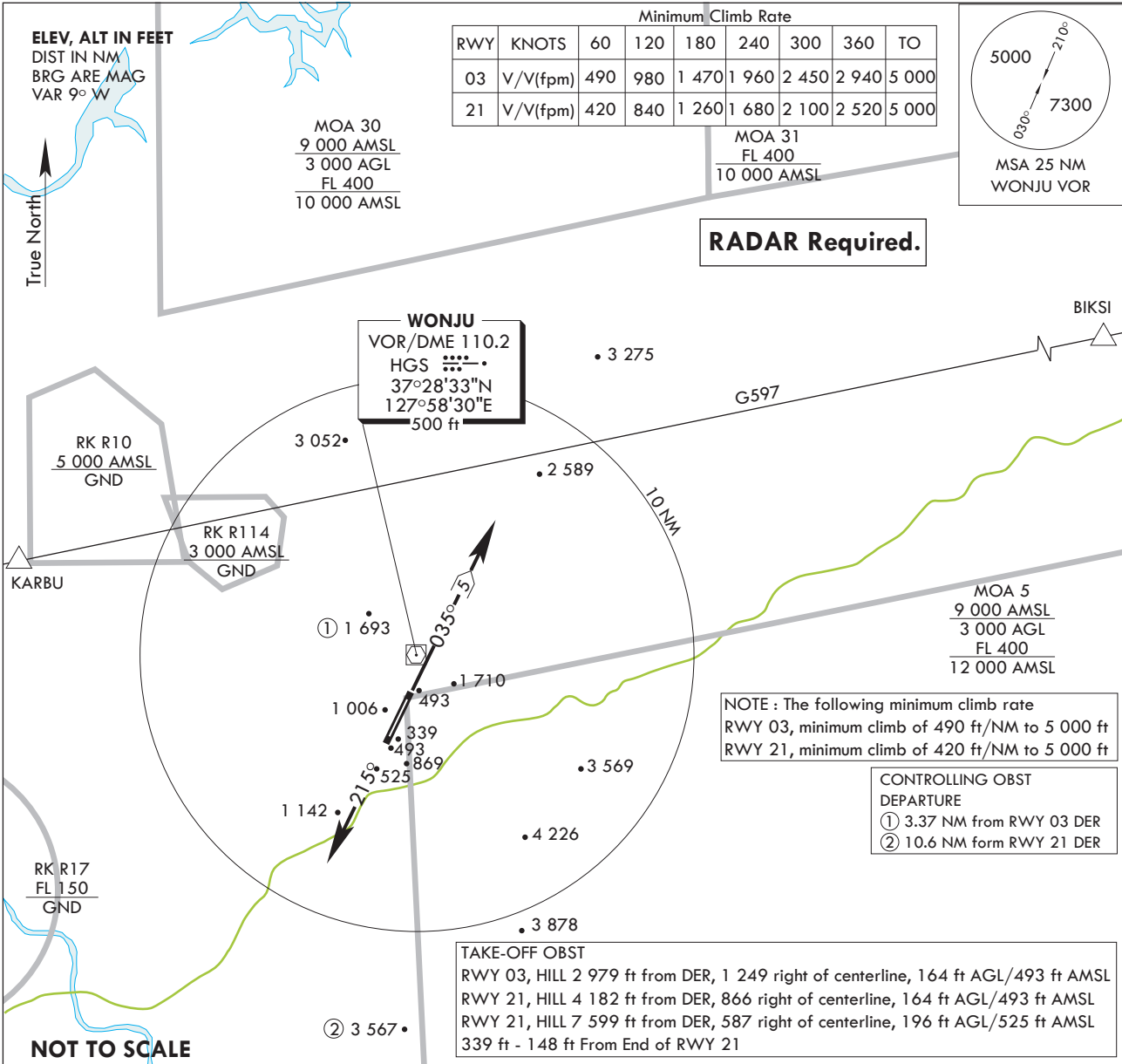
**STANDARD DEPARTURE CHART
INSTRUMENT(SID)**

TRANSITION ALT 14 000
TRANSITION LVL FL 140

WONJU DEP 130.2
268.5
WONJU TWR 265.5 118.325
236.6 126.2

**WONJU/Wonju(RKNW)
RWY 03/21
WONJU 1D**

Note : Departure under U.S. TERPS.



DEPARTURE ROUTE DESCRIPTION

TAKE-OFF RWY 03 : Climb HDG 035° to 5 NM, Thence.....

TAKE-OFF RWY 21 : Climb HDG 215°, Thence.....

..... Expect radar vectors to intercept filed altitude/filed Enroute fix or Navaid. Maintain 7 000 ft or assigned altitude(flight level). Expect filed altitude/flight level 10 minute after departure.

LOST COMMUNICATIONS : If radio contact is not established with departure control prior to reaching 5 000 ft, continue climb to 7 000 ft before turning to filed fix/Navaid and proceed filed route and altitude.

Change : Information of course/track for standard instrument departure procedure.

INTENTIONALLY

LEFT

BLANK

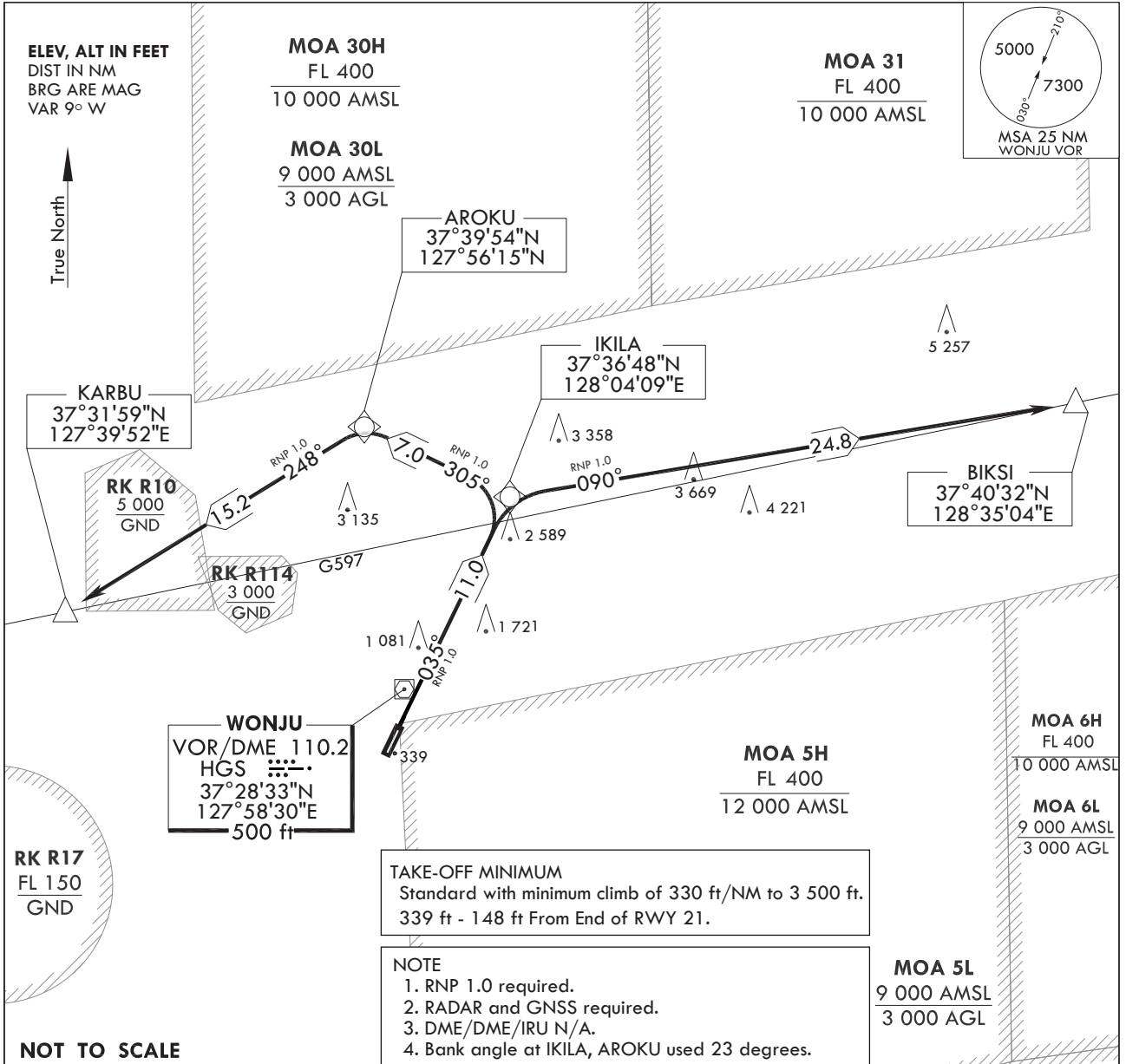
**STANDARD DEPARTURE CHART
INSTRUMENT(SID)**

TRANSITION ALT 14 000
TRANSITION LVL FL 140

WONJU DEP	130.2	268.5
WONJU TWR	126.2	118.325
	236.6	265.5

**WONJU/Wonju(RKNW)
RWY 03
RNAV(GNSS) IKILA 1**

Note : Departure under U.S TERPS.



DEPARTURE ROUTE DESCRIPTION

TAKE-OFF RWY 03 : Climb on course 035° to IKILA, thence.....

KARBU transition : Then on track 305° to AROKU then on track 248° to cross KARBU at 6 500 ft.

BIKSI transition : Then on track 090° to cross BIKSI at 6 500 ft.

Change : Information of course/track for standard instrument departure procedure and NOTE 2.

WONJU/Wonju(RKNW)
RWY 03
RNAV(GNSS) IKILA 1

AERONAUTICAL DATA TABULATION

Standard Instrument Departure Procedure Coding Tables

RNAV(GNSS) IKILA 1 - RWY 03

Serial Number	Path Descriptor	Waypoint Identifier	Fly -Over	Course/Track ° M(° T)	Distance (NM)	Turn Direction	Altitude (ft)	Speed (kt)	Coordinates	VPA /TCH	Navigation specification	Remarks
001	-	RWY 21	-	-	-	-	-	-	37°26'56.74"N 127°58'02.23"E	-	RNP APCH	-
002	CF	IKILA	-	035 (026.3)	11.0	-	-	-	37°36'47.66"N 128°04'08.88"E	-	RNP APCH	CG 330 ft/NM to 3 500 ft

KARBU Transition

Serial Number	Path Descriptor	Waypoint Identifier	Fly -Over	Course/Track ° M(° T)	Distance (NM)	Turn Direction	Altitude (ft)	Speed (kt)	Coordinates	VPA /TCH	Navigation specification	Remarks
001	-	IKILA	-	-	-	-	-	-	37°36'47.66"N 128°04'08.88"E	-	RNP APCH	-
002	TF	AROKU	-	305 (296.3)	7.0	-	-	-	37°39'53.96"N 127°56'14.89"E	-	RNP APCH	-
003	TF	KARBU	-	248 (238.8)	15.2	-	6 500	-	37°31'59.00"N 127°39'52.00"E	-	RNP APCH	-

BIKSI Transition

Serial Number	Path Descriptor	Waypoint Identifier	Fly -Over	Course/Track ° M(° T)	Distance (NM)	Turn Direction	Altitude (ft)	Speed (kt)	Coordinates	VPA /TCH	Navigation specification	Remarks
001	-	IKILA	-	-	-	-	-	-	37°36'47.66"N 128°04'08.88"E	-	RNP APCH	-
002	TF	BIKSI	-	090 (081.2)	24.8	-	6 500	-	37°40'32.00"N 128°35'04.00"E	-	RNP APCH	-

Change : Information of course/track for standard instrument departure procedure.

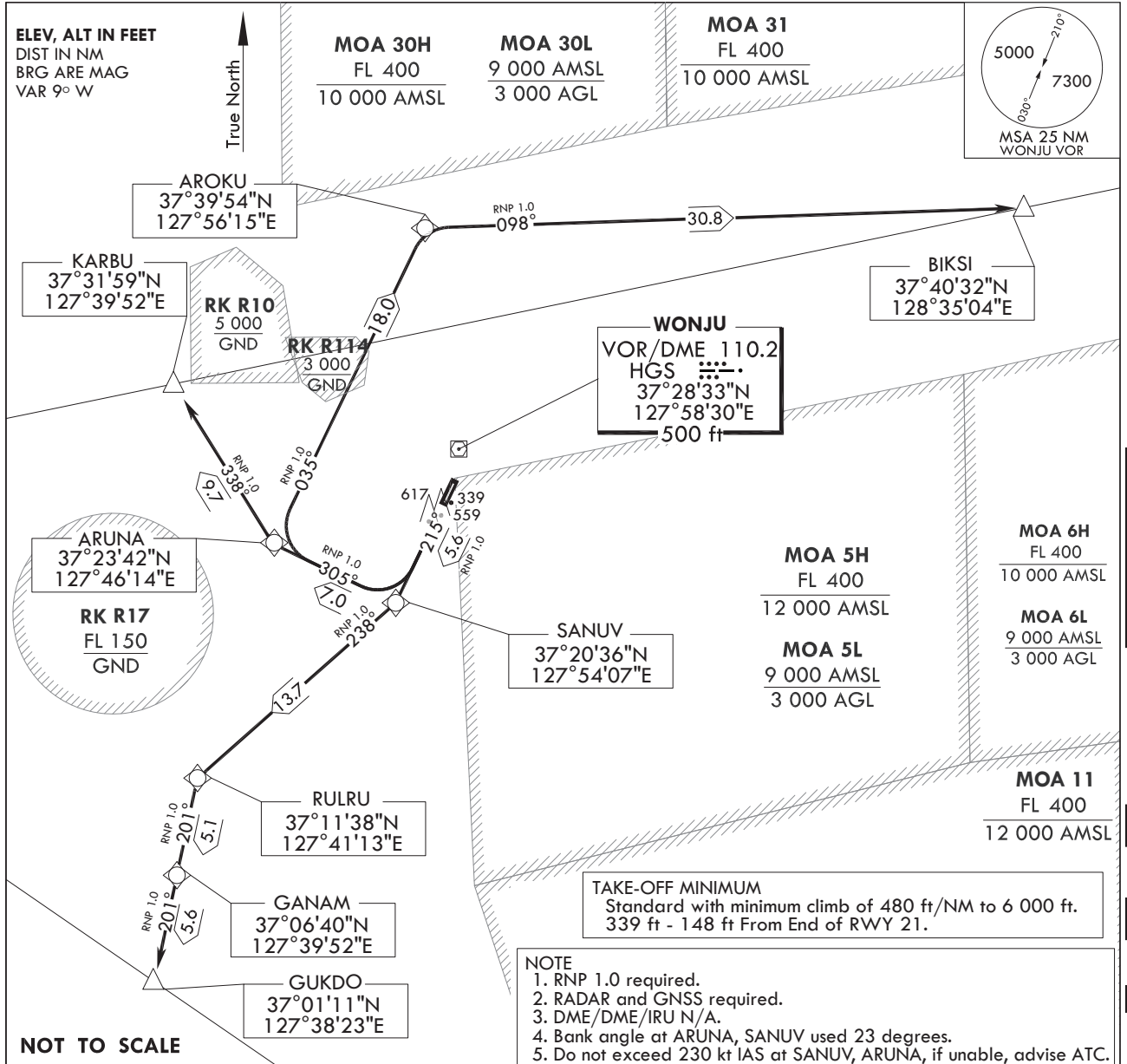
**STANDARD DEPARTURE CHART
INSTRUMENT(SID)**

TRANSITION ALT 14 000
TRANSITION LVL FL 140

WONJU DEP 130.2
268.5
WONJU TWR 126.2 118.325
236.6 265.5

**WONJU/Wonju(RKNW)
RWY 21
RNAV(GNSS) SANUV 2**

Note : Departure under U.S TERPS.



DEPARTURE ROUTE DESCRIPTION

TAKE-OFF RWY 21 :

Climb on course 215° to SANUV, thence.....

KARBU TRANSITION :

Max 230 kt IAS until SANUV then on track 305° to ARUNA, then on track 338° to cross KARBU at 6 500 ft.

BIKSI TRANSITION :

Then on track 305° to ARUNA, Max 230 kt IAS until ARUNA, then on track 035° to AROKU, then on track 098° to cross BIKSI at 6 500 ft.

GUKDO TRANSITION :

Then on track 238° to RULRU, then on track 201° to GANAM, then on track 201° to cross GUKDO at 6 500 ft.

Change : Information of course/track for standard instrument departure procedure and NOTE 2.

WONJU/Wonju(RKNW)
RWY 21
RNAV(GNSS) SANUV 2

AERONAUTICAL DATA TABULATION

Standard Instrument Departure Procedure Coding Tables

RNAV(GNSS) SANUV 2 - RWY 21

Serial Number	Path Descriptor	Waypoint Identifier	Fly -Over	Course/Track ° M(° T)	Distance (NM)	Turn Direction	Altitude (ft)	Speed (kt)	Coordinates	VPA /TCH	Navigation specification	Remarks
001	-	RWY 03	-	-	-	-	-	-	37°25'36.98"N 127°57'12.75"E	-	RNP APCH	-
002	CF	SANUV	-	215 (206.3)	5.6	-	-	-230	37°20'36.46"N 127°54'06.91"E	-	RNP APCH	CG 480 ft/NM to 6 000 ft

KARBU Transition

Serial Number	Path Descriptor	Waypoint Identifier	Fly -Over	Course/Track ° M(° T)	Distance (NM)	Turn Direction	Altitude (ft)	Speed (kt)	Coordinates	VPA /TCH	Navigation specification	Remarks
001	-	SANUV	-	-	-	-	-	-	37°20'36.46"N 127°54'06.91"E	-	RNP APCH	-
002	TF	ARUNA	-	305 (296.2)	7.0	-	-	-	37°23'42.07"N 127°46'14.18"E	-	RNP APCH	CG 480 ft/NM to 6 000 ft
003	TF	KARBU	-	338 (328.5)	9.7	-	6 500	-	37°31'59.00"N 127°39'52.00"E	-	RNP APCH	-

BIKSI Transition

Serial Number	Path Descriptor	Waypoint Identifier	Fly -Over	Course/Track ° M(° T)	Distance (NM)	Turn Direction	Altitude (ft)	Speed (kt)	Coordinates	VPA /TCH	Navigation specification	Remarks
001	-	SANUV	-	-	-	-	-	-	37°20'36.46"N 127°54'06.91"E	-	RNP APCH	-
002	TF	ARUNA	-	305 (296.2)	7.0	-	-	-230	37°23'42.07"N 127°46'14.18"E	-	RNP APCH	-
003	TF	AROKU	-	035 (026.2)	18.0	-	-	-	37°39'53.96"N 127°56'14.89"E	-	RNP APCH	-
004	TF	BIKSI	-	098 (088.6)	30.8	-	6 500	-	37°40'32.00"N 128°35'04.00"E	-	RNP APCH	-

GUKDO Transition

Serial Number	Path Descriptor	Waypoint Identifier	Fly -Over	Course/Track ° M(° T)	Distance (NM)	Turn Direction	Altitude (ft)	Speed (kt)	Coordinates	VPA /TCH	Navigation specification	Remarks
001	-	SANUV	-	-	-	-	-	-	37°20'36.46"N 127°54'06.91"E	-	RNP APCH	-
002	TF	RULRU	-	238 (229.0)	13.7	-	-	-	37°11'38.00"N 127°41'12.94"E	-	RNP APCH	CG 480 ft/NM to 6 000 ft
003	TF	GANAM	-	201 (192.2)	5.1	-	-	-	37°06'40.05"N 127°39'52.09"E	-	RNP APCH	-
004	TF	GUKDO	-	201 (192.3)	5.6	-	6 500	-	37°01'10.93"N 127°38'22.86"E	-	RNP APCH	-

Change : Information of course/track for standard instrument departure procedure.